



SLD0625

6.5" TFT LCD, LED Backlight 1000nits,VGA(640x480)

SLD0625 is LCD display, built-in 1000 nits high brightness for sunlight readable application. Features wide operating temperature, high brightness, AOT optical bonding, touch screen capable, and customized mechanical design; fulfill the demand for extreme environments. The high level of brightness together with LED backlight technology, the monitor brings remarkable display quality. And guaranteeing product life cycle longevity, stability, and reliability. Perfectly suitable for kiosk, ATM, POS, military, transportation, and outdoor industrial application.

Key Features

- Sunlight Readable
- LED Backlight
- High Shock & Vibration Resistance
- Low Power Consumption
- Wide Temperature. Range
- High Uniformity
- Low EMI Noise
- Wide Dimming
- Life Expectancy
- Operation Temperature: -30°C ~ 80 °C



Specifications

V2

Model No.	SLD0625	
Description	6.5" Open Frame ,TFT LCD, LED Backlight 1000nits,VGA(640x480)	
Backlight	LED Backlight	
Display Area (mm)	132.48 x 99.36 mm	
Brightness	1,000 cd/m ²	
Resolution	640 x480 (VGA)	
Contrast Ratio	600 : 1	
Pixel Pitch (mm)	0.207(H) x 0.207(V)	
Viewing Angle	160°(H), 140°(V)	
Display Colors	16.2M colors	
Response Time (Typical)	25ms (Typical)	
Power Consumption	5W	
Dimensions (mm)	172.2x101x33.5mm	
Weight (Net)	0.38Kg	
Control Board (Optional)	<input type="checkbox"/> AD5621GM <input type="checkbox"/> AD5621GD <input type="checkbox"/> AD5766GDVA <input type="checkbox"/> AD2662GDVAR	
<input type="checkbox"/> AD5621GM	VGA	
<input type="checkbox"/> AD5621GD	VGA+DVI	
<input type="checkbox"/> AD5766GDVA	VGA+CVBS+S-Video+Audio (Optional DVI)	
<input type="checkbox"/> AD2662GDVAR	VGA+DVI (Optional CVBS / S-Video/ Component / Audio)	
OSD Control Button	<input type="checkbox"/> 5 Key <input type="checkbox"/> 4 Key	
<input type="checkbox"/> 5 Key	Power Switch, Menu, Select (+,-), Auto	
<input type="checkbox"/> 4 Key	Power Switch, Menu, Select (+,-),	
OSD Menu	Brightness, Contrast, H/V Position, Color, Phase, Clock...	
Optional	<input type="checkbox"/> AOT <input type="checkbox"/> Touch Screen <input type="checkbox"/> Waterproof	

Specifications are subject to change without notice.

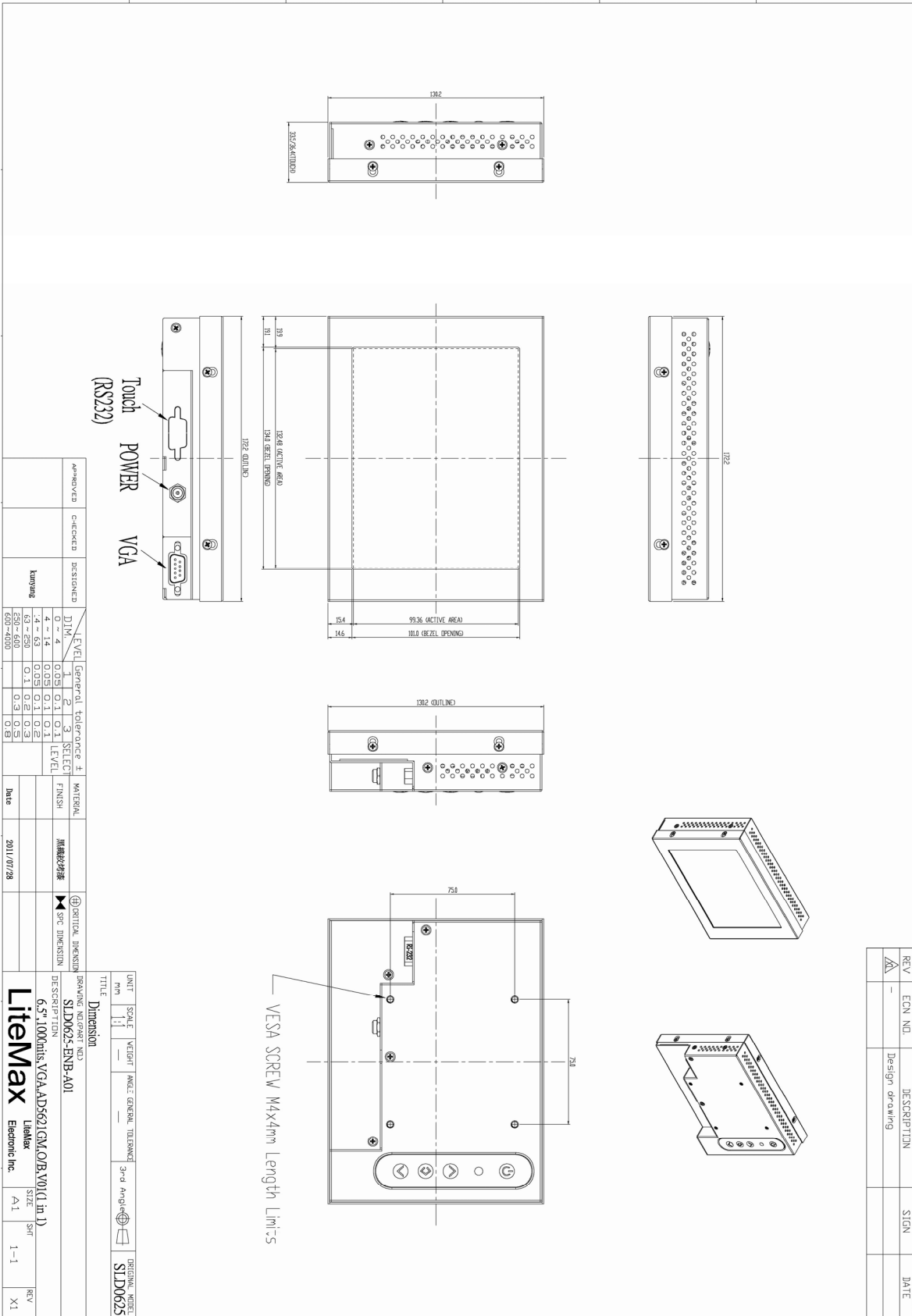
All brands or product names are trademarks or registered trademarks of their respective companies.



Mechanical Drawing

Outline Dimensions

Unit:mm



APPROVED	CHECKED	DESIGNED	LEVEL	GENERAL TOLERANCE ±	SELECT LEVEL	MATERIAL FINISH	DATE
		lumeng	DINA 4	0.05	0.1	黑鐵粉烤漆	2011/07/28
			4 ~ 14	0.05	0.1		
			14 ~ 63	0.05	0.1		
			63 ~ 250	0.1	0.2		
			250 ~ 500	0.2	0.3		
			500 ~ 1000	0.3	0.5		

REV	ECN NO.	DESCRIPTION	SIGN	DATE
1		Design drawing		

UNIT	SCALE	WEIGHT	HAZ. GENERAL TOLERANCE	3rd Angle	ORIGINAL MODEL
mm	1:1				SILD0625

BRAND NAME (OPTIONAL)		TITLE	
SILD0625-EMB-A01		Dimension	
DESCRIPTION		DATE	
6.5" 1000nits VGA ADS621GM/O/B/V01 (1 in 1)		2011/07/28	
Litemax	Litemax	SIZE	REV
Electronic Inc.	Electronic Inc.	A1	1-1
			X1



Ordering Information

Part Number	Description
SLD0625-ENB-A01	6.5", 1000nits, VGA, AD5621GM, O/B, V01(1 in 1)

Optional Accessories

Part Number	Description
840612031100	ADAPTER.12V.3.33A.40W,PAA040F,P
810618301010	CABLE.POWER.AC.1830mm USA type
810618301090	CABLE,POWER,AC,1830mm Europe type
810618301050	CABLE.POWER.AC.1830mm UK type
810618301170	CABLE.POWER,AC,1830mm Australia type
810618301030	CABLE.POWER.AC.1830mm Japan type