



## SLD1055-E V3

### 10.4" TFT LCD, LED Backlight 1000nits, XGA(1024x768)

The SLD1055-E is a 10.4 inch industrial grade sunlight readable LCD, with high brightness 1000 nits for sunlight readable application. It produce sharp images, crisp text and lifelike colors. The Durapixel LED backlight technology ensures high reliability and low power consumption, suitable for outdoor application, kiosk, factory automation, military, transportation and gaming application.

#### Key Features

- High Brightness 1000 nits
- Sunlight Readable
- Aspect Ratio: 4:3
- Wide Viewing Angle of 176°(H), 176°(V)
- Wide Temperature (-30°C~70°C)
- Low Power Consumption
- BL MTBF: 70,000 hours



### Specifications

Model Name	SLD1055-E V3
Description	10.4" TFT LCD, LED Backlight 1000 nits, XGA (1024x768)
Screen Size	10.4"
Display Area (mm)	210.43(H) x 157.82(V)
Brightness	1000 cd/m <sup>2</sup>
Resolution	1024x768
Aspect Ratio	4 : 3
Contrast Ratio	1000 : 1
Pixel Pitch (mm)	0.2055(H) x 0.2055(V)
Pixel Pre Inch (PPI)	123
Viewing Angle	176°(H),176°(V)
Color Saturation (NTSC)	59%
Display Colors	16.2M
Response Time (Typical)	25ms
Panel Interface	LVDS
Input Interface	VGA, DVI-D
Input Power	DC12V
Power Consumption	16W
OSD Key	4 Keys (Power Switch, Menu, +, -)
OSD Control	Brightness, Color, Contrast, H/V Position...etc
Dimensions (mm)	311 x 202 x 57
Bezel Size(U/B/L/R)	21.3/21.3/49.4/49.4 mm
Weight (Net)	2.5kg
Mounting	VESA 75x75
Operating Temperature	-30 °C ~ 70 °C
Storage Temperature	-30 °C ~ 80 °C

SLD= Panel+ LED Driving Board + AD Control Board + Housing

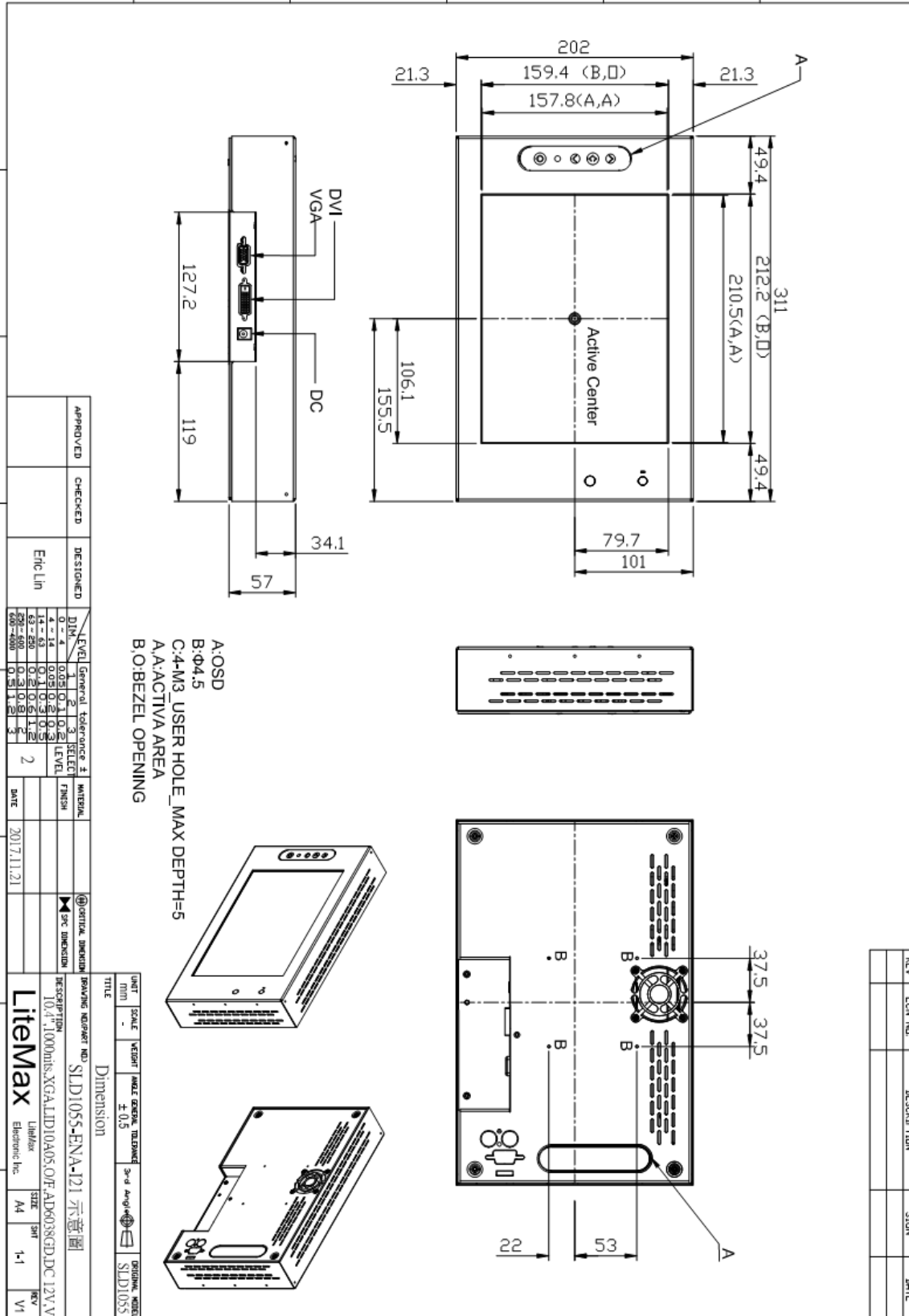


Specifications are subject to change without notice.  
 All brands or product names are trademarks or registered trademarks of their respective companies.

## Mechanical Drawing

### Outline Dimensions

Unit:mm





### Ordering Information

Part Number	Description
<b>SLD1055-ENA-I11</b>	10.4",1000nits,XGA,LID10A,AD6038GD,O/F, DC12V,V3

### Optional Accessories

Part Number	Description
<b>840612051212</b>	ADAPTER,AC/DC,12V/5A,60W.Power-Din-4P,CWT.G99-ABF060F-N022.Efficiency-level-6,R
<b>810618301010</b>	CABLE.POWER.AC.1830mm USA type
<b>810618301090</b>	CABLE,POWER,AC,1830mm Europe type
<b>810618301050</b>	CABLE.POWER.AC.1830mm UK type
<b>810618301170</b>	CABLE.POWER,AC,1830mm Australia type
<b>810618301031</b>	CABLE.POWER.AC.1830mm Japan type

### Customer request

<b>Touch</b>	SCT (Single-Touch), PCT (Multi-Touch)
<b>Glass</b>	Tempered glass, AR coating.....