

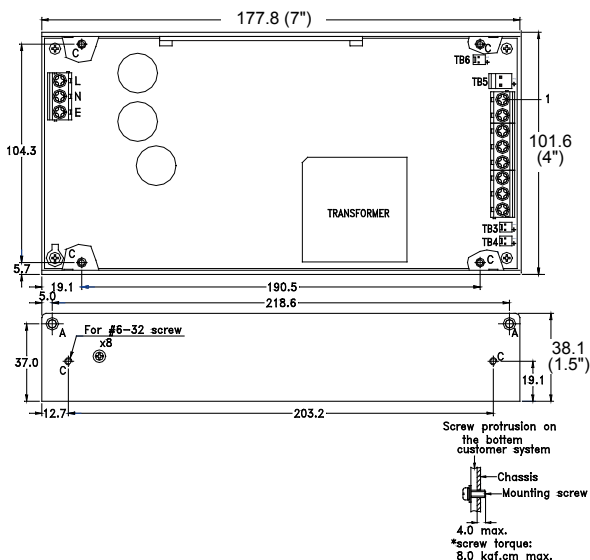


4" x 7" x 1.5"

General Specifications:

Input voltage 90 VAC to 264 VAC
 Input frequency 47 Hz to 63 Hz
 Standby power < 0.2W at no load
 (remote off status) < 0.5W at 5Vsb/40mA output
 Inrush current < 30/60A at 115/230VAC
 Efficiency 90% typ.
 Hold up time 18ms typ.
 Over load/Short circuit protection auto recovery
 Over voltage protection latch off
 Operating temperature -30°C to 70°C
 derating: 2.5% / °C > 50°C

Mechanical Specifications:



Features:

- Surge load (3 x rated current, Vo>60% typical for 1 sec)
- Peak load (1.5 ~ 2 x rated current, Vo=rated for 5 sec)
- Design for BF application
- Convection cooling for Rated power
- With +5Vsb & +12V Fan output
- Remote on/off & remote sense
- Fan speed controlled by loading
- EMI class B
- -30°C to +70°C operating temperature
- 5,000m operation altitude

Applications:

- For peak load and surge load applications, such as active speaker and audio power amplifier, motor drive, coffee machine, vending machine, gaming machine, and oehr industrials.
- For EMI class B application, such as home healthcare device, and other medical devices.

Cooling 400W at convection cooling
 500W at forced air cooling
 Storage temperature -40°C to +85°C
 EMI EN55022 "B", EN61000-3-3
 Harmonics..... EN61000-3-2, class D
 EMS..... EN61000-4-2,-3,-4,-5,-6,-8,-11
 Safety UL/CSA/EN60950-1, 2nd edition
 ANSI/AMMI/CSA/EN60601-1, 3.1 edition
 Energy Saving ENERGY STAR
 for computers version 6.0
 for displays version 6.0
 ErP regulation EC(No) 1275/2008

Notes:

1. Size:
4" x 7" x 1.5"
2. Mounting Hole:
Side edge: 203.2 x 19.1 (mm)
Bottom : 109.5 x 104.3 (mm)
3. Connectors:
AC input: Terminal Blocks (with opt. PC cover)
DC output: Terminal Blocks (with opt. PC cover)
Remote ON/OFF & Standby Output & Fan output & Remote Sense: Molex 5272-03 or equivalent
4. Output Pin assignment:
Function Pin assignment:

1	2	3	4	5	6	7	8
Vo	Vo	Vo	Vo	GND	GND	GND	GND

	TB3	TB4	TB5	TB6	TB7
Function Pin	FAN Output	Standby Output	Remote Sense	Remote Control	PG/PP
1	GND	GND	Sense-	GND	GND
2	+12V	+5Vsb	Sense+	+	+
5. Packing:
Net weight: TBD g approx. / unit
Gross weight: TBD kg approx. / carton, TBD units / carton
Carton size (mm): TBD (L) x TBD (W) x TBD (H)

-Hui-

10 years Warranty (contact Skynet's Distributors for details)

Output Specifications:

MODEL NO.	OUTPUT RAIL	LOAD				INITIAL ACCURACY	STEP EFFICIENCY			AVERAGE EFFICIENCY
		MIN.	RATED	MAX.	PEAK		@ 20% LOAD	@ 50% LOAD	@ 100% LOAD	
SNP-P407-S	+12V	0A	33.3A		66.6A	+11.9V~+12.1V +4.5V~+5.5V	85%	90%	90%	88%
	+5Vsb	0A	1.5A							
SNP-P409-S	+24V	0A	16.7A		33.3A	+23.9V~+24.1V +4.5V~+5.5V	85%	90%	90%	88%
	+5Vsb	0A	1.5A							

Note:

- Standby Power Consumption with System:**
For computers and displays, ENERGY STAR in U.S. and ErP regulation in Europe require the input power should be less than 0.5W at standby mode.
- Output Load:**
400W for convection cooling; 500W for forced air cooling.
- Peak Load Duration:**
Peak 800W can last for 5 sec.
- Isolation Grade:**
Primary ↔ Ground : 1MOPP (1500Vac)
Primary ↔ Secondary : 2MOPP (4000Vac)
Secondary ↔ Ground : 1MOPP (1500Vac)
- Leakage Current:**
Earth leakage current < 300uA
Touch current < 100uA
- Model Selection:**
Most of power supplies will create audible burst sound at light load, if the application wants to meet input power < 0.5W at standby mode.
SNP-P40x-S is for ITE & medical applications which require standby mode.