



3.7" x 6.6" x 1.38"

General Specifications:

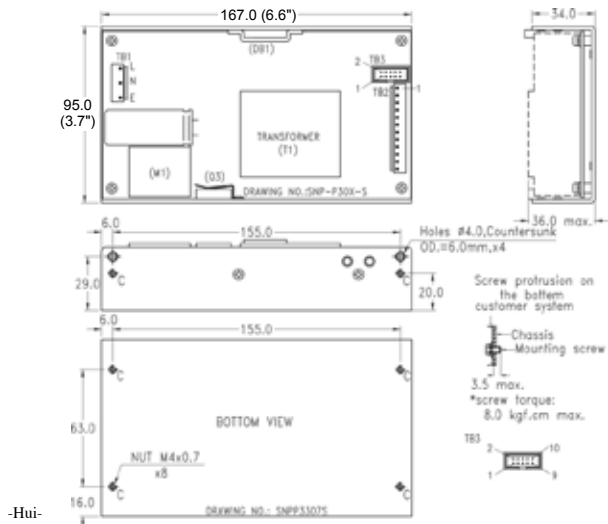
Input voltage 90 VAC to 264 VAC
 Input frequency 47 Hz to 63 Hz
 Standby power < 0.2W at no load
 (remote off status) < 0.5W at 5Vsb/40mA output
 Inrush current < 30/60A at 115/230VAC
 Efficiency 90% typ.
 Hold up time 18ms typ.
 Over load/Short circuit protection auto recovery
 Over voltage protection latch off
 Operating temperature -35°C to 70°C
 derating: 2.5% / °C > 50°C

Features:

- Design for BF application
- With +5Vsb & +12V Fan output
- Remote on/off & Remote sense
- With Power good & Power fail signal
- Fan speed controlled by load
- High mechanical torque start-up
- -35°C to +70°C operating temperature
- 5,000m operation altitude
- Convection cooling for rated load
- Forced air for max. load

Cooling 300W at convection cooling
 420W at forced air cooling
 Storage temperature -40°C to +85°C
 EMI EN55022 "B", EN61000-3-3
 Harmonics EN61000-3-2, class D
 EMS EN61000-4-2,-3,-4,-5,-6,-8,-11
 Safety UL/CSA/EN60950-1, 2nd edition
 ANSI/AMMI/CSA/EN60601-1, 3.1 edition
 Energy Saving ENERGY STAR
 for computers version 6.0
 for displays version 6.0
 ErP regulation EC(No) 1275/2008

Mechanical Specifications:



Notes:

1. Size:
3.7" x 6.6" x 1.38"
2. Mounting Hole:
Side edge: 155 x 29 (mm)
Bottom: 155 x 63 (mm)
3. Connectors:
AC input: Using JST B5P-VH withdraw 2 pins or equivalent
DC output: Using JST B12P-VH or equivalent
Remote ON/OFF & Standby Output & Fan output & Remote Sense: 2 x 5 (10 pins) 0.1 pitch
4. Output Pin assignment (TB2): Function Pin assignment (TB3):

1 ~ 6	7 ~ 12
Vo	GND

Pin 1	FAN GND	Pin 2	FAN
3	RS+	4	GND
5	RS-	6	+5Vsb
7	GND	8	Remote
9	PG/PF	10	GND
5. Packing:
Net weight: 635 g approx. / unit
Gross weight: 15.5 kg approx. / carton, 20 units / carton
Carton size (mm): 453 (L) x 362 (W) x 279 (H)

10 years Warranty (contact SkyNET's Distributors for details)

Output Specifications:

MODEL NO.	OUTPUT RAIL	LOAD				INITIAL ACCURACY	STEP EFFICIENCY			AVERAGE EFFICIENCY
		MIN.	RATED	MAX.	PEAK		@ 20% LOAD	@ 50% LOAD	@ 100% LOAD	
SNP-P307-S	+12V	0A	25A	35A	50A	+11.9V~+12.1V +4.5V~+5.5V	87%	90.5%	91%	89%
	+5Vsb	0A	1A	1.5A						
SNP-P309-S	+24V	0A	12.5A	17.5A	25A	+23.9V~+24.1V +4.5V~+5.5V	87%	91%	91.5%	89%
	+5Vsb	0A	1A	1.5A						
SNP-P30H-S (ITE only)	+60V	0A	5A	7A	10A	+59.1V~+60.1V +4.5V~+5.5V	87%	91%	92%	90%
	+5Vsb	0A	1A	1.5A						

Note:

1. **Standby Power Consumption with System:**

For computers and displays, ENERGY STAR in U.S. and ErP regulation in Europe require the input power should be less than 0.5W at standby mode.

2. **Output Load:**

300W for convection cooling; 420W for forced air cooling.

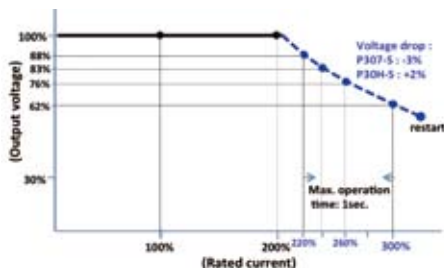
3. **Peak Load Duration:**

Peak 600W can last for 5 sec.

4. **High Torque Output Current:**

For motor drive or audio amplifier, the output current can be up to 300% rated current within 1000ms, and output voltage can keep above 60% Voltage.

Example: SNP-P309-S



5. **Isolation Grade:**

Primary ↔ Ground : 1MOPP (1500Vac)

Primary ↔ Secondary : 2MOPP (4000Vac)

Secondary ↔ Ground : 1MOPP (1500Vac)

6. **Leakage Current:**

Earth leakage current < 300uA

Touch current < 100uA

7. **Model Selection:**

SNP-P307-S and SNP-P309-S are for ITE & medical applications.

SNP-P30H-S is only for ITE application.