



3" x 5" x 1.18"/1.26"

General Specifications:

Input voltage 90 VAC to 264 VAC
 Input frequency 47 Hz to 63 Hz
 Inrush current < 30A at 115VAC
 (cold start at 25°C) or < 60A at 230VAC
 Efficiency 80%~90% depends on models
 Hold up time 20ms typical
 at rated load and 115VAC
 Over load protection auto recovery
 Short circuit protection..... auto recovery
 Over voltage protection latch off
 Remote Sense compensates for 0.5V load drop min.

Features:

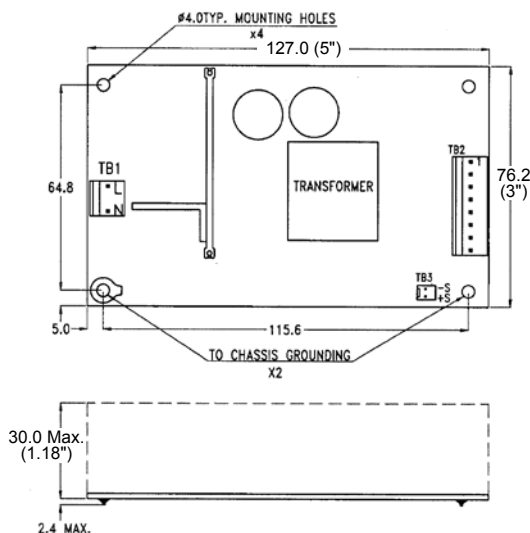
- With built-in PFC
- Only 1.26 inch height
- 4.8 Watt per cubic inch
- With ITE safety
- Efficiency between 80% to 90%
- Operation from 0°C to 50°C by convection

Applications:

- For industrial device such as IPC system.
- For peak power required system such as coffee machine.

Mechanical Specifications:

SNP-Z106



Max. capacitive loadSNP-Z106 / 30000uF
 SNP-Z107 / 10000uF, SNP-Z109 / 2700uF
 Operating temperature 0°C to 50°C convection
 Cooling free air convection for 100W
 with 18CFM forced air flow for 130W
 Storage temperature -20°C to +85°C
 EMI EN55022 "B" FCC "B"
 Harmonics EN61000-3-2
 EMS EN61000-4-2,-3,-4,-5,-6,-11
 Safety UL 60950-1
 CSA C22.2 No. 60950-1, TUV EN 60950-1

Notes:

- Size:
 - SNP-Z106, Z107, Z108, Z109, Z10T, Z10B
3" x 5" x 1.18"
 - SNP-Z101, Z103, Z10D
3" x 5" x 1.26"
- Mounting Hole:
64.8 x 115.6 (mm)
- Connectors:
AC input : Molex 5277-02A or equivalent
DC output : Molex 5273 or equivalent
Remote Sense : Molex 5045-02A or equivalent (for SNP-Z10x, x=6, 7, 8, 9, B, T)
Fan Output : Molex 5045-02A or equivalent (for SNP-Z10, SNP-Z10D)
- Output Pin assignment:

| PIN NO. | 1 | 2 | 3 | 4 | 5 | 6 | 7 | 8 | 9 | 10 |
|--------------|-------|-------|-----|-----|-----|-----|-----|------|------|------|
| SNP-Z10D | +3.3V | +3.3V | GND | GND | GND | GND | GND | +5V | +5V | +12V |
| SNP-Z101 | +5V | +5V | +5V | GND | GND | GND | GND | +12V | -12V | |
| SNP-Z106 | +5V | +5V | +5V | +5V | GND | GND | GND | GND | | |
| SNP-Z103 | +12V | +12V | GND | GND | GND | GND | +5V | +5V | | |
| Other Models | +V | +V | +V | GND | GND | GND | | | | |

- Packing:
Net weight: 310 g approx. / unit
Gross weight: 17 kg approx. / carton, 48 units / carton
Carton size (mm): 397 (L) x 339 (W) x 327 (H)

-Steven-

10 years Warranty (contact Skynet's Distributors for details)

Output Specifications:

| MODEL NO. | OUTPUT RAIL | LOAD | | | | VOLTAGE ACCURACY | RIPPLE NOISE | LINE REG. | LOAD REG. |
|-----------|-------------|------|-------|-------|------|------------------|--------------|-----------|-----------|
| | | MIN. | RAGED | MAX. | PEAK | | | | |
| SNP-Z106 | +5V | 0A | 20A | 26A | | +4.95V~+5.05V | 50mVpp | ±0.5% | ±1% |
| SNP-Z107 | +12V | 0A | 9A | 10.8A | | +11.90V~+12.10V | 120mVpp | ±0.5% | ±1% |
| SNP-Z108 | +15V | 0A | 7A | 8.7A | | +14.90V~+15.10V | 120mVpp | ±0.5% | ±1% |
| SNP-Z109 | +24V | 0A | 4.5A | 5.4A | | +23.80V~+24.20V | 200mVpp | ±0.5% | ±1% |
| SNP-Z10T | +48V | 0A | 2.3A | 2.7A | | +47.60V~+48.40V | 200mVpp | ±0.5% | ±1% |
| SNP-Z101 | +5V | 0A | 11.5A | 15A | | +4.95V~+5.05V | 50mVpp | ±0.5% | ±1% |
| | +12V | 0A | 3A | 5A | | +11.40V~+12.60V | 100mVpp | ±0.5% | ±5% |
| | -12V | 0A | 0.5A | 0.5A | | -11.40V~+12.60V | 100mVpp | ±0.5% | ±5% |
| SNP-Z103* | +5V | 0A | 7A | 10A | | +4.95V~+5.05V | 50mVpp | ±0.5% | ±1% |
| | +12V | 0A | 8A | 10A | | +11.40V~+13.20V | 120mVpp | ±0.5% | ±5% |
| SNP-Z10D | +3.3V | 0A | 10A | 15A | | +3.20V~+3.40V | 50mVpp | ±0.5% | ±1% |
| | +5V | 0A | 8A | 10A | | +4.75V~+5.25V | 50mVpp | ±0.5% | ±5% |
| | +12V | 0A | 0.5A | 0.5A | | +11.40V~+12.60V | 100mVpp | ±0.5% | ±5% |
| SNP-Z10B | +3.3V | 0A | 25A | 30A | | +3.20V ~+3.40V | 50mVpp | ±0.5% | ±1% |

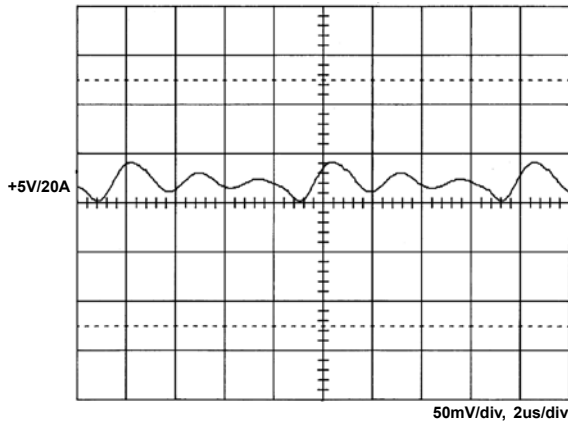
* SNP-Z103: Convection cooling : 100W Forced air with 18CFM : 130W

Note:

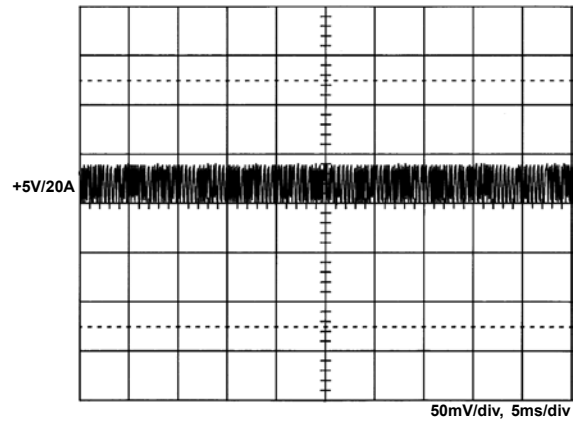
1. The total output current is rated load with free air convection and max. load with 18CFM of forced air flow over the unit.
2. At factory, in 60% rated load condition, each output is checked to be within voltage accuracy.
3. Line regulation is defined by changing ±10% of input voltage from nominal line at rated load.
4. Load regulation is defined by changing ±40% of measured output load from 60% rated load at another output set to 60% rated load
5. Ripple & noise is measured by using 15MHz bandwidth limited oscilloscope and terminated each output with a 0.47uF capacitor and a 47uF electrolytic capacitor at rated load and nominal line.
6. Hold up time is measured from the end of the last charging pulse to the time which the main output drops down to low limit of main output at rated load and nominal line.
7. Efficiency is measured at rated load and nominal line.
10. Model Selection:
SNP-Z10x is for ITE application.

Performance for SNP-Z106:

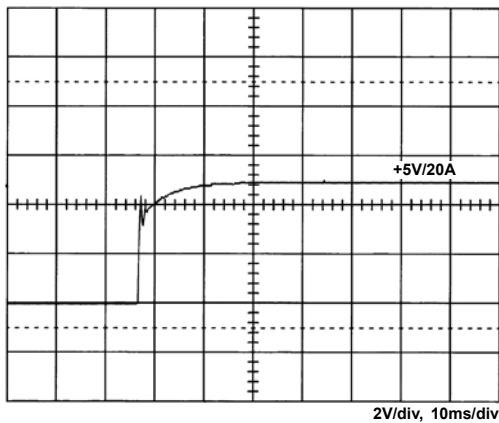
1. Switching frequency ripple



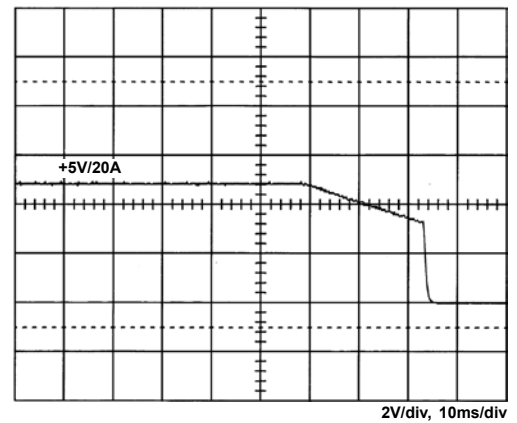
2. Line frequency ripple



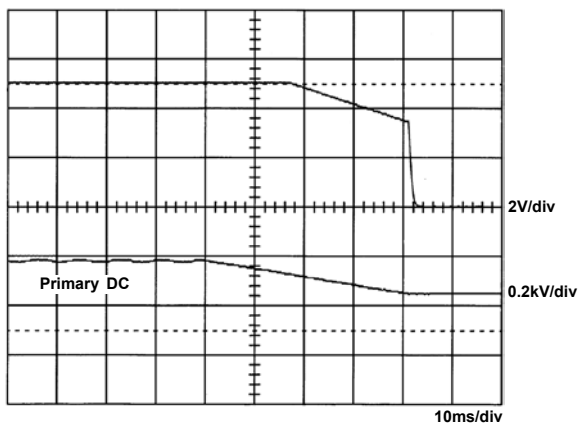
3. Output turn on wave form



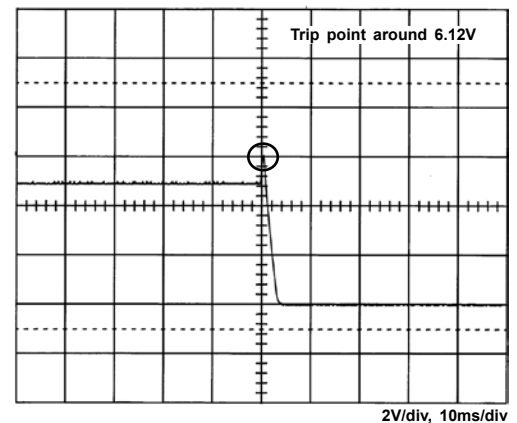
4. Output turn off wave form



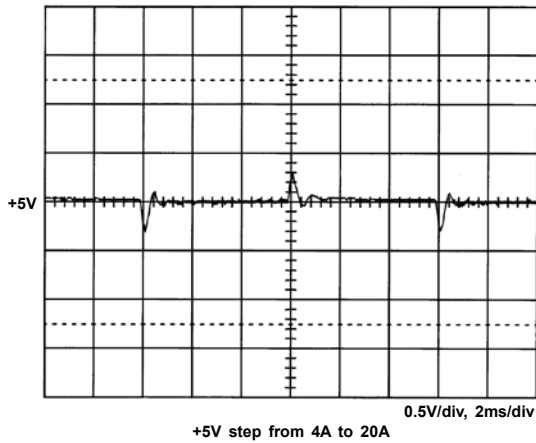
5. Hold-up time



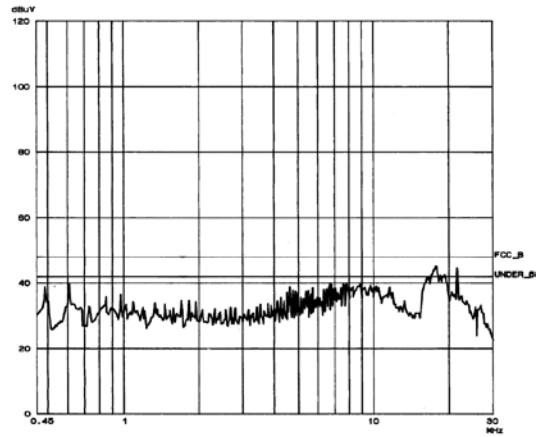
6. Over voltage protection



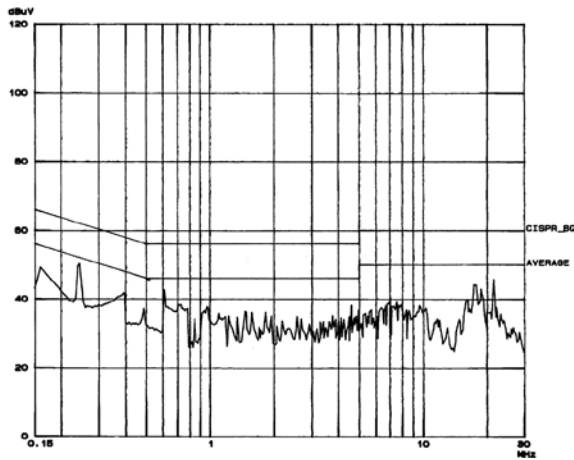
7. +5V step response



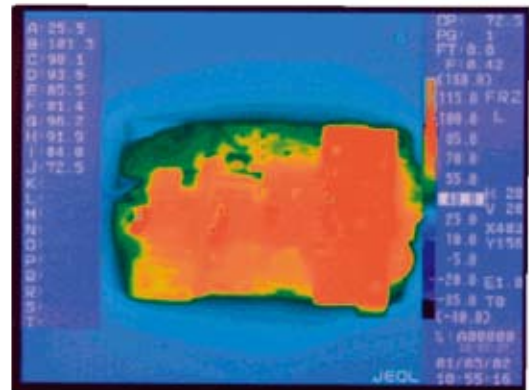
8. FCC B



9. EN55022 B

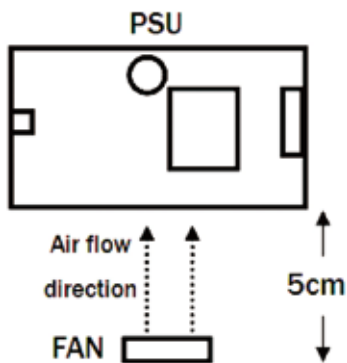


10. Thermal profile



Test condition:
M/N : SNP-Z106, Input : 104V
Output : 5V/20A, Ambient : 25.5°C

11. Max. load fan location



12. Power derating curve

