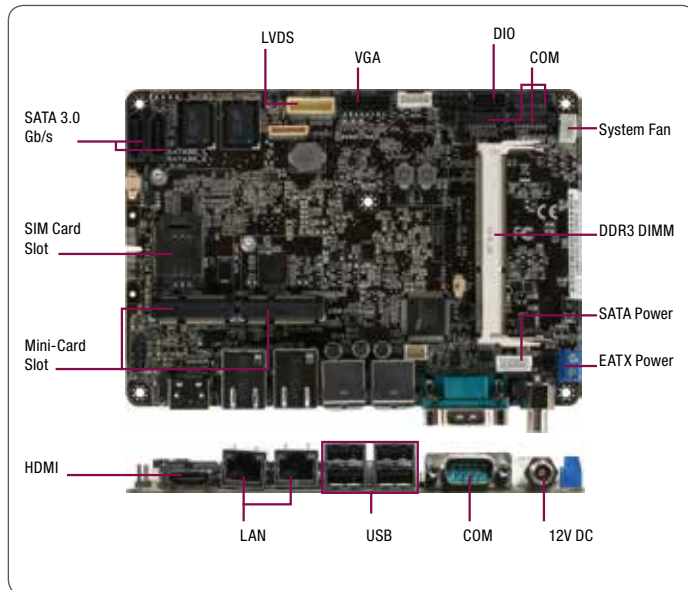


# EPC-CV1

Intel® Atom™ N2600/N2800 Processor Low Profile Board With Graphics AMD HD7410M & Dual LAN



## Features

- Intel® Atom™ N2600/N2800 Processor
- Intel® NM10 Express Chipset
- 204-pin DDR3 800/1066 MHz SODIMM x 1, Up to 4 GB (N2800)/2 GB (N2600)
- Realtek 8111F PCIe Gigabit Ethernet LAN x 2
- VGA, HDMI, 24-bit Dual-Channel LVDS
- Audio Amplifier
- SATA 3.0 Gb/s x 2, COM x 4
- USB 2.0 x 6
- Mini-Card x 2
- DC 12V (Phoenix/ Lockable DC Connector)
- GPU: AMD HD7410M (For EPC-CV1-A10 & EPC-CV1-A20)

## Specifications

System	
Form Factor	EPIC
Processor	Intel® Atom™ processor N2600/N2800
System Memory	DDR3 800/1066 MHz SODIMM x 1, up to 4 GB (N2800)/ 2 GB (N2600), non-ECC, un-buffered memory
Chipset	Intel® NM10
I/O Chipset	Fintek 81866D-1
Ethernet	Realtek PCIe GB LAN 8111F x 2
TPM	NO
BIOS	64M bit Flash ROM, AMI BIOS
Wake On LAN	Yes (WOL/ PXE)
Watchdog Timer	1~255 step by software program
H/W Status Monitoring	Temperature Monitor on CPU/Chassis Voltage Monitor on Vcore/5V/3.3V/12V Fan Monitor on CPU/Chassis
Expansion Interface	Mini-Card x 2 (Full size with SIM card Interface x 1, Half size x 1)
Battery	Lithium battery
Power Requirement	DC connector at back I/O x 1 Onboard 2 pin Power connector x 1
Power Consumption (Typical)	Intel® Atom™ N2600, DDR3 800/2 GB, 12VDC 1.15A@12V (tested by EPC-CV1-A10)
Board Size	4.53" x 6.5" (115mm x 165mm)
Gross Weight	1.2 lb (0.5 Kg)
Operation Temperature	14°F ~ 131°F (-10°C ~ 55°C) (EPC-CV1-A10 & EPC-CV1-A20) 14°F ~ 140°F (-10°C ~ 60°C) (EPC-CV1-A10-01)
Storage Temperature	-40°F ~ 185°F (-40°C ~ 85°C)
Operation Humidity	0%~90% RH, non-condensing
MTBF (Hours)	228,000
Display	
Chipset	AMD HD7410M with 512 MB memory
Resolution	VGA: Up to 1920 x 1200 @60 Hz HDMI: Up to 1920 x 1200 @60 Hz LVDS: Up to 1920 x 1200 @60 Hz 18 & 24-bit Dual-Channel (EPC-CV1-A10 & EPC-CV1-A20) Up to 1366 x 768 @60 Hz 18-bit Single Channel (EPC-CV1-A10-01)
Output Interface	VGA, HDMI, LVDS
I/O	
Storage	SATA 3.0 Gb/s ports x 2, SATA power connector x 1
Serial Port	RS-232 x 3, RS-232/485 supports 5V/12V x 1
Universal Serial Bus	USB 2.0 ports x 6 (2 ports at mid-board, 4 ports at back panel)
Digital I/O	8-bit Digital I/O interface (4-in /4-out)
Ethernet	RJ-45 x 2
PS/2 Port	Keyboard/Mouse onboard connector x 1
Audio	Line-out/ Mic-in/ SPDIF onboard



## Packing List

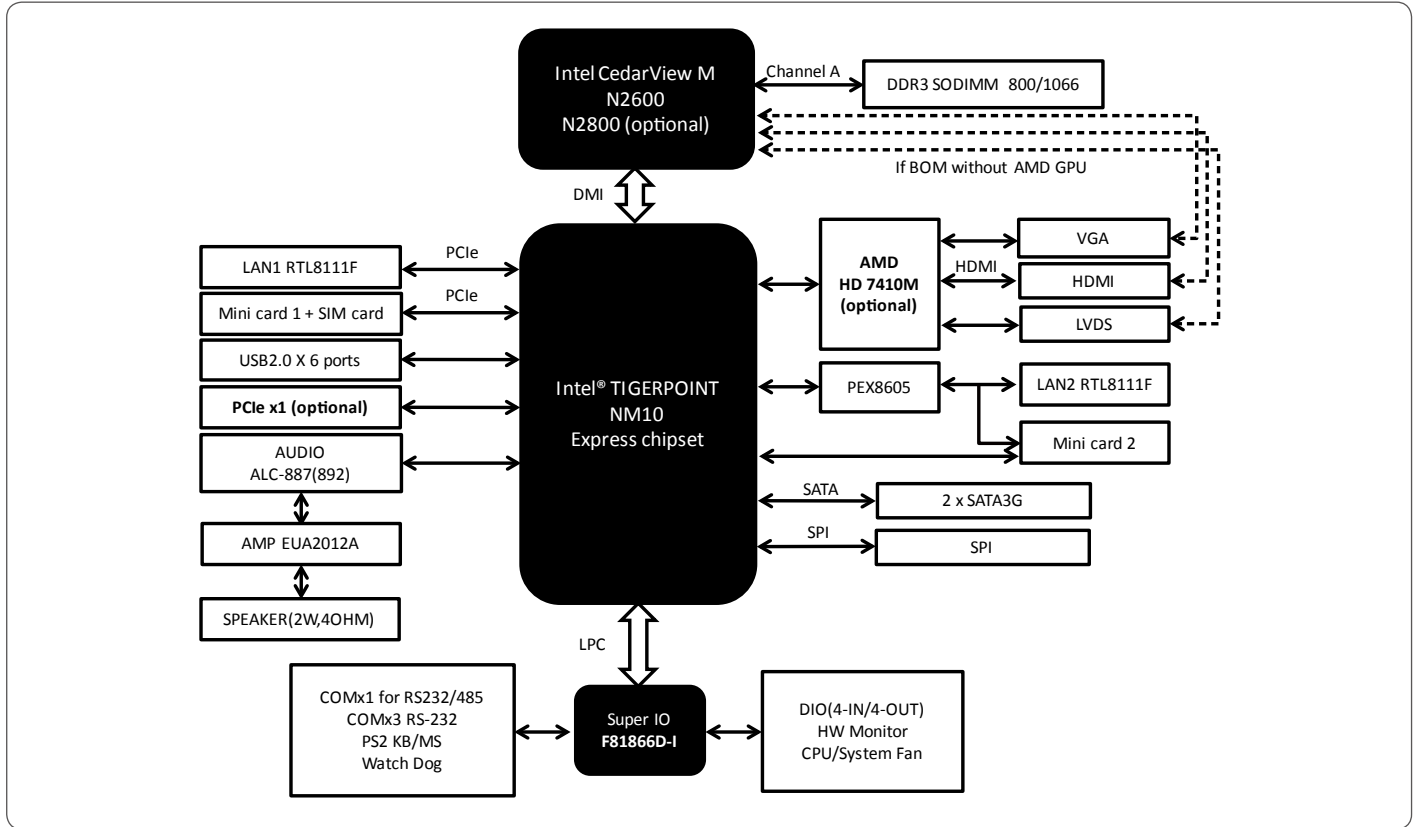
- Product CD
- SATA Power Cable
- SATA Cable
- EPC-CV1

## Optional Accessories

- 1757306007  
Lockable Adapter 60W
- 1757908403  
Lockable Adapter 84W
- 1700060152  
PS2 Cable (150MM, p=2.00mm)
- 1709100201  
USB 2.0 cable (10P, 200MM, p=2.00mm, w/bracket)
- 1701090150  
COM Port Cable
- 1701160201  
VGA Port Cable
- M16CV10030  
Heat Spreader

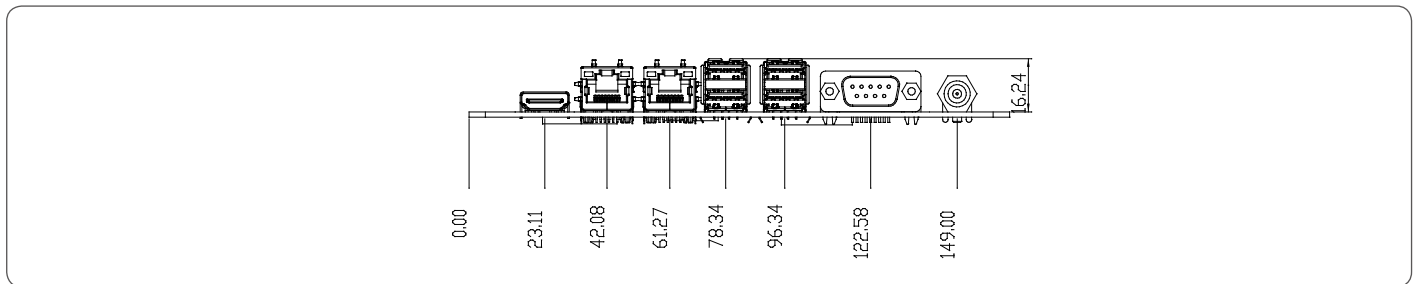
# EPC-CV1

## Block Diagram



## Dimension

Unit: mm



## Ordering Information

Part Number	CPU	GPU	RAM	Fan/Fanless	Display	Storage	LVDS	LAN	USB	RS-232	RS-232/422/485	Expansion Slot	Power	Temp.
EPC-CV1-A10	N2600	AMD 7410M	Up to 2 GB, DDR3 800/1066 MHz	Fanless	VGA, HDMI, LVDS	SATA2 x 2	18/24b, 2CH	GbE x 2	USB 2.0 x 6	3	1	Mini-Card x 2	12V DC	-10°C ~ 55°C
EPC-CV1-A10-01	N2600	—	Up to 2 GB, DDR3 800/1066 MHz	Fanless	VGA, HDMI, LVDS	SATA2 x 2	18b, 2CH	GbE x 2	USB 2.0 x 6	3	1	Mini-Card x 2	12V DC	0°C ~ 60°C
EPC-CV1-A20	N2800	AMD 7410M	Up to 4 GB, DDR3 800/1066 MHz	Fanless	VGA, HDMI, LVDS	SATA2 x 2	18/24b, 2CH	GbE x 2	USB 2.0 x 6	3	1	Mini-Card x 2	12V DC	-10°C ~ 55°C

Note:  
Intel® Atom™ Processor D2000 series and N2000 series (CV) do NOT support DMA function that may affect ECP mode of Parallel port.