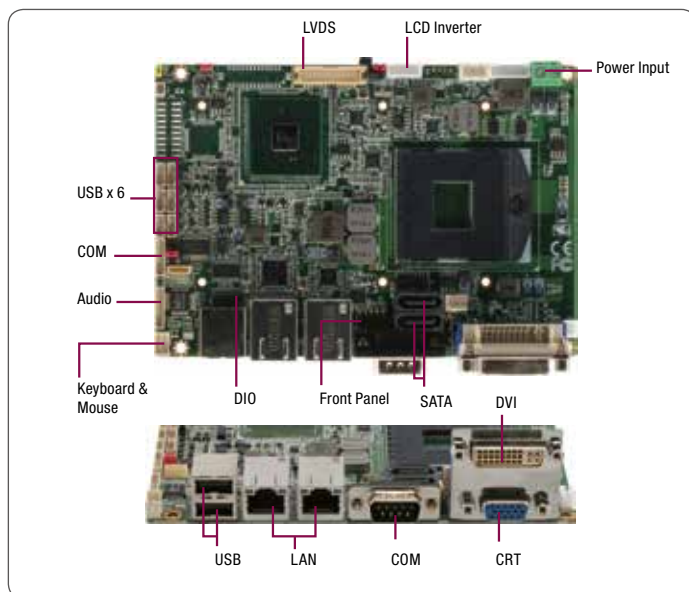


GENE-QM57

3.5" SubCompact Board with Intel® Core™ i7/i5 Mobile/Celeron® Processor



Features

- Intel® Core™ i7/i5 Mobile/Celeron® (32nm) Processor
- Intel® QM57
- DDR3 800/1066 MHz SODIMM x 1, Up to 4 GB
- Gigabit Ethernet x 2, RJ-45 x 2
- CRT, 18/24-bit Dual-Channel LVDS LCD, DVI
- 2CH HD Audio
- SATA 3.0 Gb/s x 2 (Optional RAID), CFast™ x 1
- USB2.0 x 8, COM x 2, 8-bit Digital I/O
- Mini-Card x 1
- +12V Only Operation
- Supports iAMT 6.0 with Intel® QM57

Specifications

System	
Form Factor	3.5"
Processor	Intel® Core™ i7/i5/Celeron® (32nm) up to 2.66 GHz
System Memory	204-pin DDR3 800/1066 MHz SODIMM x 1, up to 4 GB
Chipset	Intel® QM57
I/O Chipset	ITE IT8712
Ethernet	Intel® 82577LM & 82574L, 10/100/1000Base-TX, RJ-45 x 2
BIOS	AMI BIOS - 8 MB SPI Flash
Wake on LAN	Yes
Watchdog Timer	Generates a time-out system reset
H/W Status Monitoring	Supports power supply voltages and temperature monitoring
Expansion Interface	Mini-Card x 1, LPC
Trusted Platform Module (TPM)	Infineon SLB 9635TT 1.2
Battery	Lithium battery
Power Requirement	+12V, AT/ATX
Power Consumption (Typical)	Intel® Core™ i7 620M@2.66 GHz, DDR3 4 GB 1066 MHz 3.64A@+12V
Board Size	5.75" x 4" (146mm x 101.6mm)
Gross Weight	0.88 lb (0.4 kg)
Operating Temperature	32°F ~ 140°F (0°C ~ 60°C)
Storage Temperature	-40°F ~ 176°F (-40°C ~ 80°C)
Operating Humidity	0% ~ 90% R/H, non-condensing
MTBF (Hours)	69,000
Display	Supports CRT/LCD, DVI/LCD simultaneous/ dual view displays
Chipset	Intel® CPU integrated
Memory	Shared system memory up to 512 MB
Resolutions	Up to 1920 x 1440 for CRT, Up to 1920 x 1200 for LCD, DVI
LCD Interface	Up to 24-bit dual-channel LVDS
DVI	DVI x 1
I/O	
Storage	SATA 3.0 Gb/s x 2, CFast™ x 1
Serial Port	RS-232 x 1, RS-232/422/485 (auto flow) x 1
USB	USB2.0 x 8
PS/2 Port	Keyboard x 1, Mouse x 1
Digital I/O	Supports 8-bit (Programmable)
Audio	Line-in, Line-out, Mic-in



Packing List

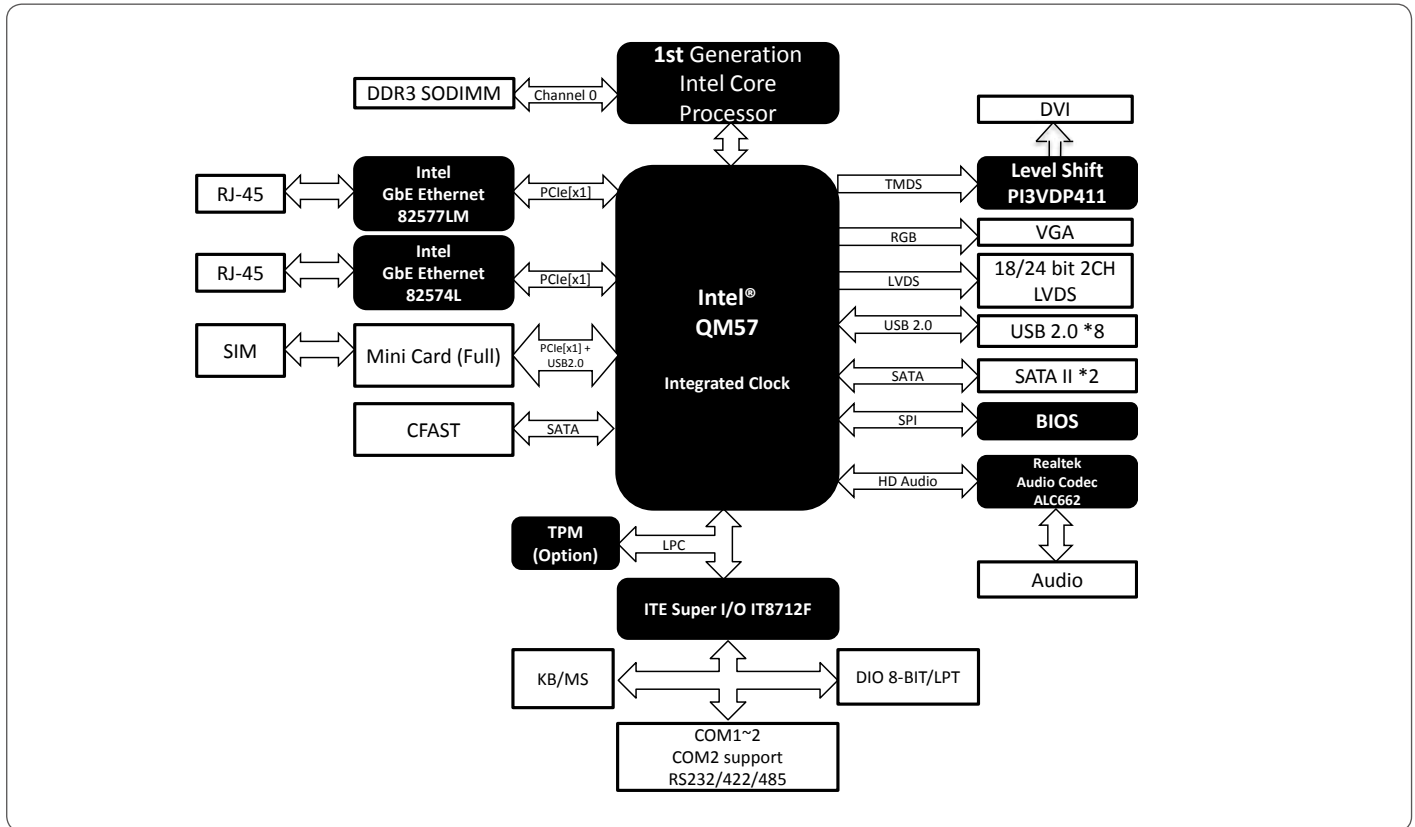
- Cooler
- Product DVD
- GENE-QM57

Optional Accessories

- **1700050207**
USB Cable, Length 20cm
- **1701090150**
COM Port Cable, Length 15cm
- **1709100254**
Audio Cable, Length 25cm
- **1702150155**
Power Cable for 2.5" SATA Hard Disk, Length 15cm
- **1709070500**
SATA Cable, Length 50cm
- **1702002010**
Big Single Row 4-pin Power Input Cable for +12V Input, Length 10cm
- **1700060157**
Keyboard/ Mouse Cable

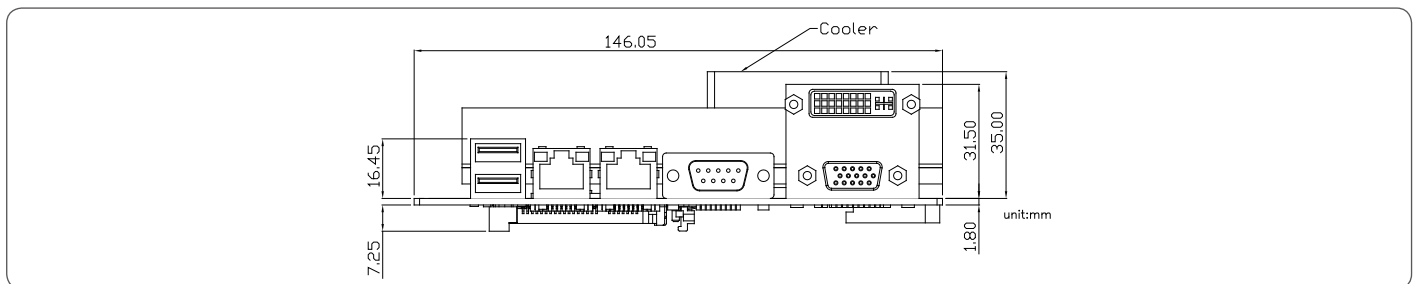
GENE-QM57

Block Diagram



Dimension

Unit: mm



Ordering Information

Part Number	CPU	Chipset	Fan/Fanless	Display	LVDS	Storage	LAN	USB	RS-232	RS-232/422/485	Expansion Slot	Power	Power Temp	Others
TF-GENE-QM57-A10	Socket	Intel® QM57	Fan	CRT + LVDS CRT + DVI DVI + LVDS	18/24b, 2CH	SATA x 2 CFast™ x 1	GbE x 2	USB2.0 x 8	1	1	Mini-Card x 1	+12V, AT/ATX	0°C ~ 60°C	DIO x 8
TF-GENE-QM57-A10-01	Socket	Intel® QM57	Fan	CRT + LVDS	18/24b, 2CH	SATA x 2 CFast™ x 1	GbE x 2	USB2.0 x 8	1	1	Mini-Card x 1	+12V, AT/ATX	0°C ~ 60°C	DIO x 8