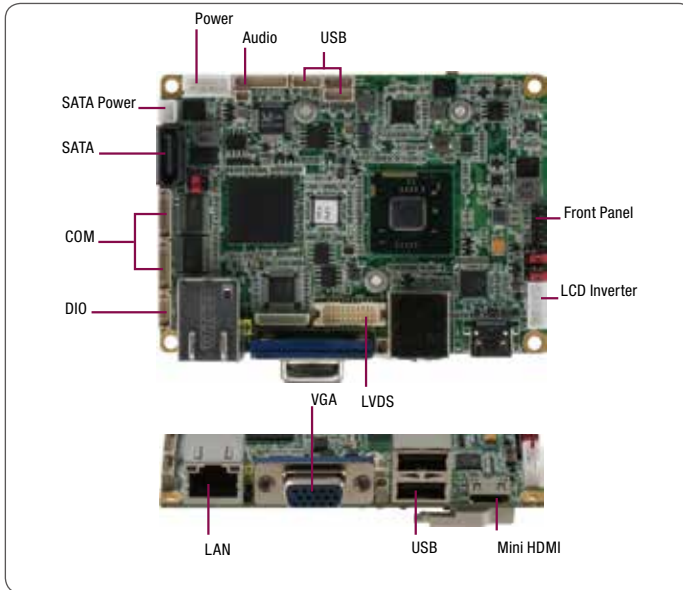


# PICO-CV01

Pico-ITX Fanless Board with HDMI and Intel® Atom™ N2600 Processor



## Features

- Intel® Atom™ N2600 Processor Up to 1.6 GHz
- 204-pin DDR3 800 MHz SODIMM x 1, Up to 2 GB
- Gigabit Ethernet x 1, RJ-45 x 1
- Mini HDMI Support
- 18-bit Single Channel LVDS LCDs
- HD Audio for Line-in/out & Mic
- mSATA/ Mini-Card (Half-size) x 1, SATA 2 x 1
- USB2.0 x 5, COM x 2, 4-bit Digital I/O
- +12V Power Input

## Specifications

System	
Form Factor	Pico-ITX Board
Processor	Intel® Atom™ N2600 Processor up to 1.6 GHz
System Memory	204-pin DDR3 800 MHz SODIMM x 1, up to 2 GB
Chipset	Intel® Atom™ N2600 + NM10
I/O Chipset	Fintek F81801U-I
Ethernet	Realtek RTL8111E for 10/100/1000Base-TX, RJ-45 x 1
BIOS	AMI-32Mb ROM
Wake On LAN	Yes
Watchdog Timer	255 levels
H/W Status Monitoring	Vcore, +1.5V_DDR
Expansion Interface	Mini-Card/ mSATA (Half-size) x 1
Battery	Lithium battery
Power Requirement	+12V, AT/ATX (Default)
Power Consumption (Typical)	Intel® Atom™ N2600 1.6 GHz, DDR3 800 MHz 2 GB 0.83A@+12V
Board Size	3.94" (L) x 2.756" (W) (100mm x 72mm)
Gross Weight	1.1 lb (0.5 kg)
Operation Temperature	32 °F ~ 140 °F (0 °C ~ 60 °C)
Storage Temperature	-40 °F ~ 176 °F (-40 °C ~ 80 °C)
Operation Humidity	0% ~ 90% relative humidity, non-condensing
MTBF (Hours)	95,000
Display	
Chipset	Intel® Atom™ N2600 Processor
Resolution	LVDS up to 1366 x 768 (18-bit) @ 60 Hz; VGA & HDMI up to 1920 x 1200 @ 60 Hz
LCD Interface	18-bit single channel LVDS with PWM function
I/O	
Storage	SATA3.0 Gb/s x 1, mSATA x 1 (shared with Mini-Card control by BIOS)
Serial Port	RS-232 x 1, RS-232/422/485 x 1
USB	USB 2.0 x 5
Digital I/O	4-bit Digital I/O (Programmable, 2-in/2-out)
Audio	Audio Buzzer x 1, HD Audio Code (Realtek ALC662) for Line-in/out & Mic x 1



## Packing List

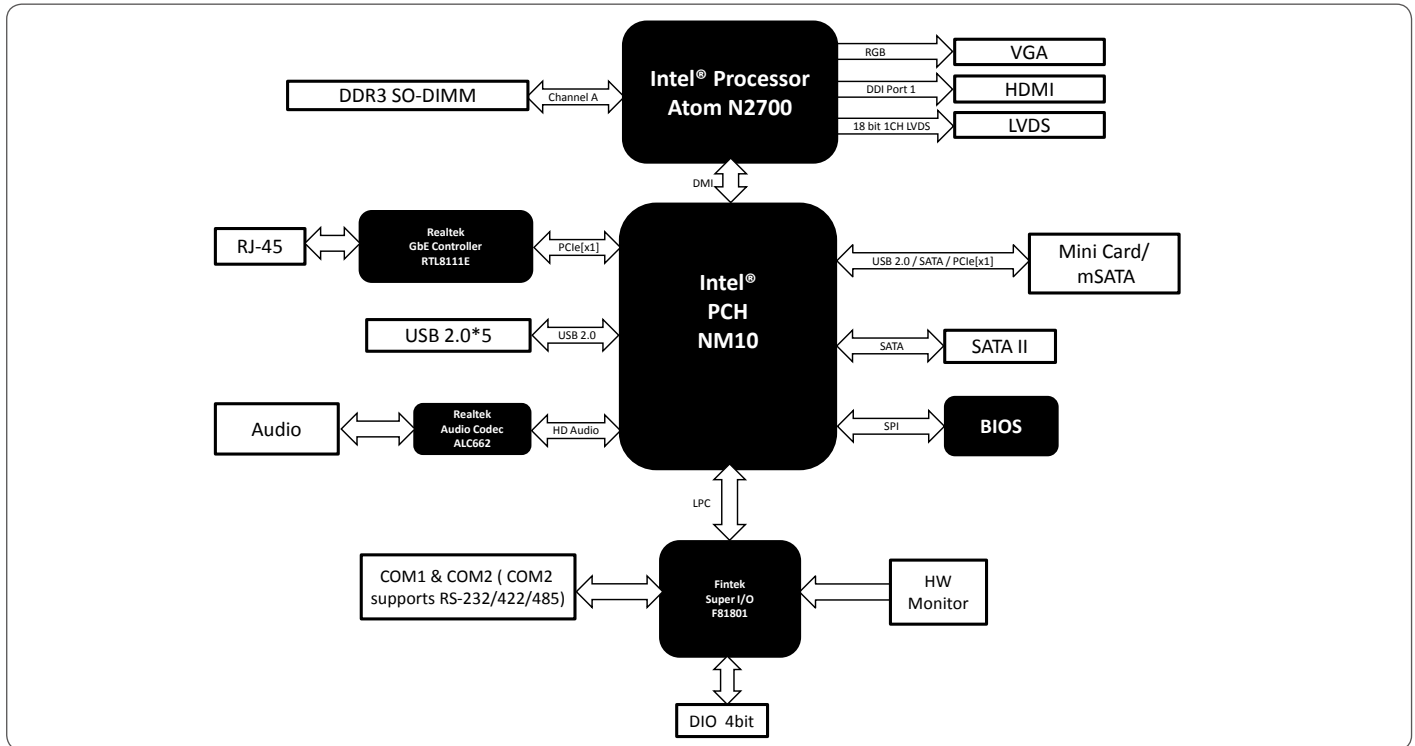
- **170204010S**  
MB Power Cable
- **1709070500**  
SATA data Cable
- **1702150155**  
SATA Power Cable
- **M16CV01040**  
Low profile standard heat-sink for PICO-CV01-A10-11
- **M16CV01020**  
WITAS I heat-sink for PICO-CV01W1-A10-10
- **Product DVD**
- **PICO-CV01**  
Remark: The packing include one heat-sink only.

## Optional Accessories

- **1700050207**  
USB Cable, Length 20cm
- **1701090150**  
COM1 Cable, Length 15cm
- **1709100254**  
AUDIO Cable, Length 25cm
- **1701100156**  
Front Panel Cable, Length 15cm
- **1701090150**  
COM 2 Cable For RS-232, Length 15cm
- **170302010C**  
Buzzer Cable

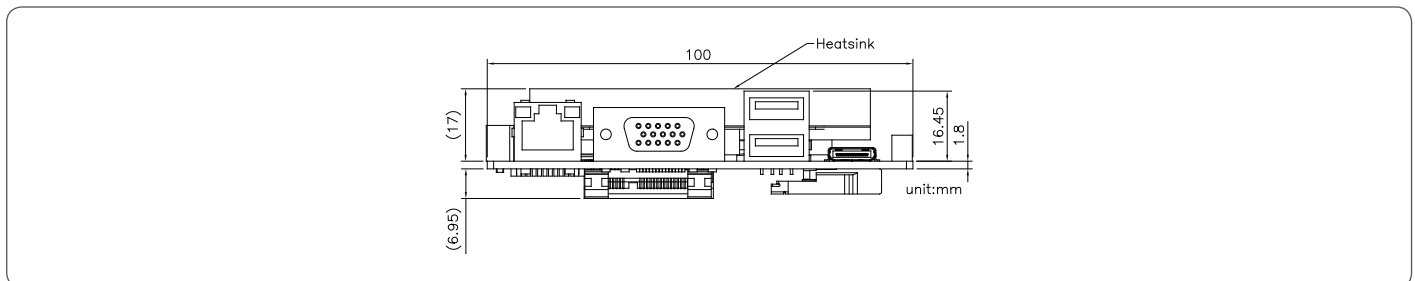
# PICO-CV01

## Block Diagram



## Dimension

Unit: mm



## Ordering Information

Part Number	CPU	RAM	Fan/Fanless	Display	LVDS	Storage	LAN	USB	RS-232	RS-232/422/485	Expansion Slot	Power	Power Temp	Others
PICO-CV01-A10-11	Atom™ N2600	DDR3	Fanless	CRT+ LVDS, CRT+ mHDMI	18b 1CH	SATA 2 x 1, mSATA/Mini-Card x 1	GbE x 1	UBS2.0 x 5	1	1	DIO 4-bit	+12V (ATX)	0°C ~ 60°C	Audio
PICO-CV01W1-A10-10	Atom™ N2600	DDR3	Fanless	CRT+ LVDS, CRT+ mHDMI	18b 1CH	SATA 2 x 1, mSATA/Mini-Card x 1	GbE x 1	UBS2.0 x 5	1	1	DIO 4-bit	+12V (ATX)	-20°C ~ 70°C (WITAS 1)	Audio

**Note:**

Intel® Atom™ Processor D2000 series and N2000 series (CV) do NOT support DMA function that may affect ECP mode of Parallel port.